



**Rocky Mountain Creation Fellowship**  
P. O. Box 3451  
Littleton, CO 80161  
[www.youngearth.org](http://www.youngearth.org)  
**CHANGE SERVICE REQUESTED**

NONPROFIT ORG  
U.S. POSTAGE  
PAID  
Littleton, CO  
Permit No. 313

***MONTHLY MEETING LOCATION***  
***2ND FRIDAY OF EACH MONTH, 7PM.***  
Bethlehem Lutheran Church  
**21st and Wadsworth**

**“For in six days the LORD made the heavens and the earth, the sea and all that is in them...”**  
**Exodus 20:11**

## In This Issue

President's Corner	1
November 13th Speaker – <b>Mr. Louis Degrave</b>	3
RMCF Volunteer Opportunities	3
December 11th Speaker – <b>Dr. Edward Boudreaux</b>	4
<b>Membership Form – Support RMCF!</b>	5
We Are Fearfully and Wonderfully Made	6
The Amazing Regenerating Rib	8
September Meeting Highlights – <b>Dr. Kevin Anderson</b>	10
October Meeting Highlights – <b>Mr. Paul Myrant</b>	11
Darwin Was Wrong Webcast	13
Factoid #3: Evolutionary Development	14

**"For in six days the Lord made the Heavens and the earth, the sea and all that is in them ..."** - Exodus 20:11

### RMCF Upcoming Speakers

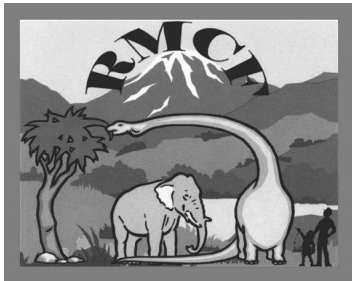
Nov. 13	Mr. Louis Degrave
Dec. 11	Dr. Ed Boudreaux

P.O. Box 3451  
Littleton, Co 80161  
rmcf@youngearth.org  
(303) 997-1101

Editor: Tony Massey

**Monthly Meeting Location**  
Bethlehem Lutheran Church  
2100 Wadsworth Blvd, Lakewood  
**2nd Friday of each month**  
**at 7:00 P.M.**

All RMCF meetings are held free of charge to the public. Please see our website [www.youngearth.org](http://www.youngearth.org) for detailed information on the speakers and their lecture topics.



# Rocky Mountain Creation Fellowship

*Educating the World  
on the Truth of Creation*

Volume 60

November / December 2009

## **President's Corner** Dr. Edward Boudreaux

As a member of the American Chemical Society for 55 years, I receive the weekly news magazine entitled C&EN News (Chemical and Engineering News). In the Sept. 7, 2009 issue there was a letter to the editor by Katherine Dudrick entitled EDUCATION & SCIENCE VIEWPOINT, which really agitated me, so I wrote a letter to the editor in response to Dudrick's letter. Unfortunately, my letters do not get accepted by the C&EN editor if they are in any way anti-evolution; hence, I want to share this with you, the RMCF members and participants. Dudrick's letter is presented first and my letter follows.

### EDUCATION & SCIENCE VIEWPOINT (Katherine Dudrick)

"I have read about the need to overhaul science education in the U.S. and about the conflict of evolution and intelligent design for several years. To me, these two items are related. Much of the science that I was taught in the public school was what I now consider the "current status and history of science". Some years we were taught about the scientific method, but not much time was spent on it.

I performed a little survey recently asking about the scientific method. Both the new high school graduate and fellow scientists agreed that they learned about the scientific method around eighth or ninth grade and were able to remember the basic steps of the method with some thought and hints. The nonscientist had very vague memories of the lessons and no memories of the steps.

So much information is now easily available on the Internet. The tools that need to be taught now should be the scientific method, how it is used, and how to find the history and current status of a specific scientific topic in order to understand that topic. Of course a certain amount of the "current status and history of science" needs to be taught to give a good foundation on which to build more knowledge about science. The lesson on the scientific method can start in the

first with simple experiments that show cause and effect, variables, and reproducibility. These lessons on the scientific method should be presented every year, possibly twice a year. As students get older, the lessons can focus on an historical example early in the school year and on a current example later in the school year. I read several articles on graphene with interest, and I think graphene would be a great topic for the study of the scientific method in current research (C&EN, March 2, 2009 pg. 14, AND May 11, 2009 pg. 31, for example). It would be fun having students use adhesive tape to try and duplicate one of the methods used to make thinner layers of graphite to make graphene.

How does this relate to evolution and intelligent design? Most Americans do not remember the scientific method. Those of us who do can see that no reproducible research supports intelligent design, but that evolution has much research supporting it.

As children are better educated in the scientific method, maybe some who would not have chose such a “geeky” subject will find science more appealing. I find the scientific method to be a very creative process when it comes to determining new questions and how to test them. Perhaps there is a future scientist who will be able to determine a way to test and create reproducible research on intelligent design. Maybe they just need to be shown the creative part of science.”

#### ANSWER TO DUDRICK’S LETTER (Edward Boudreaux)

“In her defense of evolution vs. intelligent design (ID) as appropriate for science education, Katherine Dudrick (C&EN, Sept. 7, 2009) intimates that the obvious reason for including evolution and not iD in science education, is that the former is supported by much (reproducible) research, while the latter has no such support via reproducible research. Dudrick clearly states, “Most Americans do not remember the scientific method. Those of us who do can clearly see that no reproducible research supports intelligent design, but that evolution has much research supporting it.” In the first place, the claim that ‘most Americans do not remember the scientific method’ is an open ended statement, having no specificity in regard to various levels of science education within the U.S.. In effect, this claim is an insult to whoever *most* Americans are. According to Dudrick, either the American public at large is inadequately educated about the scientific method, or any prior education was so weak that it was soon forgotten. Unless Dudrick’s claim can provide accurately documented, unquestionable, data in support of her claim, this statement in itself is also devoid of any scientific credibility. Fortunately, I suppose I am not to be counted as one among those ‘most Americans’.

**( Continued on Page 12 )**

## November 13th Speaker – Mr. Louis DeGrave

RMCF is privileged to have as its' November Speaker our very own **Mr. Louis DeGrave!**

For over 10 years Louis has delighted audiences of all ages across the Front Range area with captivating, humorous, and moving presentations on a wide range of topics such as Creation vs. Evolution, Money, Biblical characters today, Proverbs today, and many more.

Mr. DeGrave grew up in Indonesia and spent 39 months in a Japanese concentration camp during Word War II. He received his B.S. in Civil Engineering.

Lou's talk, **Global Warming, Fact or Fiction** isn't a typical RMCF subject. However, God is not only in control of creation but also of the climate. In one hour some of you will learn more about Global Warming than many representatives in Washington, who are about to spend \$1 trillion dollars! Yes, polar bears, melting ice, and the “hockey stick” will be addressed, but there will be much, much more. Fast moving, easy to understand, over 100 slides- many pictures, and excellent for students.

Please join us for Lou’s presentation, you won't be disappointed!

There is no cost to attend this presentation and free refreshments will be served after the meeting. The RMCF library will be available at the meeting and is free to all RMCF members.

## RMCF Volunteer Opportunities

**Snack Team:** Help serve snacks after our monthly meetings. We need at least two people per group, and two or three groups. A different group serves each month. RMCF pays for snacks.

**Setup and Take down:** Help setup and take down AV equipment and book / DVD tables at our monthly meetings.

Please contact RMCF at [rmcf@youngearth.org](mailto:rmcf@youngearth.org), by calling (303) 997-1101, or speak to a board member if you are interested in helping.

## **December 11th Speaker** **Dr. Ed Boudreaux**

RMCF is privileged to have as its' December speaker, **Dr. Ed Boudreaux**. The topic of his talk will be **Human World Population**.

Dr. Ed Boudreaux is a retired professor of Chemistry & Chemical Physics from the University of New Orleans. Dr. Boudreaux relocated to the Denver area following the events of Hurricane Katrina. Dr. Boudreaux has published numerous papers in recognized scientific journals, conference proceedings and reviews, in the areas of quantum chemistry, magnetochemistry, and inorganic chemistry in general. He has also given an innumerable number of presentations in these areas, and is the author, co-author, and/or editor of five books in chemistry. Dr. Boudreaux has been actively involved in creation science as speaker, debater, publisher, etc., for 35 years and served as president of Origins Resource Association in the New Orleans, Louisiana, southern Mississippi areas for some 25 years. Dr. Boudreaux is currently president of the Rocky Mountain Creation Fellowship.

Human world population is commonly accepted to follow a mathematical progression as an S-shaped relation. It starts at a very slow growth for an initial million years, followed by a sudden rapid increase within the last 5000 - 6000 years, and then slow, but ever increasing without limit.

This is all based on erroneous assumptions regarding the history and future of mankind. If, however, the mathematics is derived starting with 1, 3 or 4 male/female pairs and allowance is made for a 50% population reduction about every 500 years within a total span of some 6000 years, a very different sort of growth rate relation is found. This curve is a step-wise relationship, ever increasing to a leveling off region at a population of about 8 billion some time after 2000 AD.

In other words, a biblical time frame for human population growth, allowing even for extreme population declines within a regular pattern, still provides an accurate result for today's world population. Furthermore, it shows that man could not have been around for more than thousands of years and the earth can never become over-populated, as we are so often lead to believe.

Please join us on Friday, December 11th to hear Dr. Boudreaux's presentation. There is no cost to attend this meeting, and free refreshments will be served after the meeting. The RMCF lending library will also be available to members.

**Rocky Mountain Creation Fellowship Membership**  
**R.M.C.F. - P.O. Box 3451 - Littleton, CO 80161**  
**Phone: (303) 997-1101 [www.youngearth.org](http://www.youngearth.org)**

I would like to become a **new** member of RMCF and receive the newsletter: 1 yr. @ \$20.00 \_\_\_ 2 yr. @ \$40.00 \_\_\_ 3 yr. @ \$60.00 \_\_\_

I would like to **renew** my membership to RMCF and receive the newsletter: 1 yr. @ \$20.00 \_\_\_ 2 yr. @ \$40.00 \_\_\_ 3 yr. @ \$60.00 \_\_\_

I would like to make/add a one-time donation of \$ \_\_\_\_\_ for \_\_\_\_\_

\_\_\_\_\_  
Please renew or place my name on the RMCF mailing list for a six month period. I am not a member.

Name \_\_\_\_\_ E-mail Address \_\_\_\_\_

Address \_\_\_\_\_ Apt. # \_\_\_\_\_

City \_\_\_\_\_ State \_\_\_\_\_ Zip Code \_\_\_\_\_

Phone \_\_\_\_\_ Church You Attend \_\_\_\_\_

You may also join RMCF and make donations by visiting [www.youngearth.org](http://www.youngearth.org). RMCF relies on the gifts and donations of its' members for its' operations. If your membership has expired or will be expiring soon, please extend your membership. **If you are interested in having good speakers at our meeting, please support RMCF with your memberships and donations.** RMCF is a non-profit organization under the IRS rules of 501(c3) and all donations are tax deductible.

## We Are Fearfully and Wonderfully Made (Ps. 139:14)

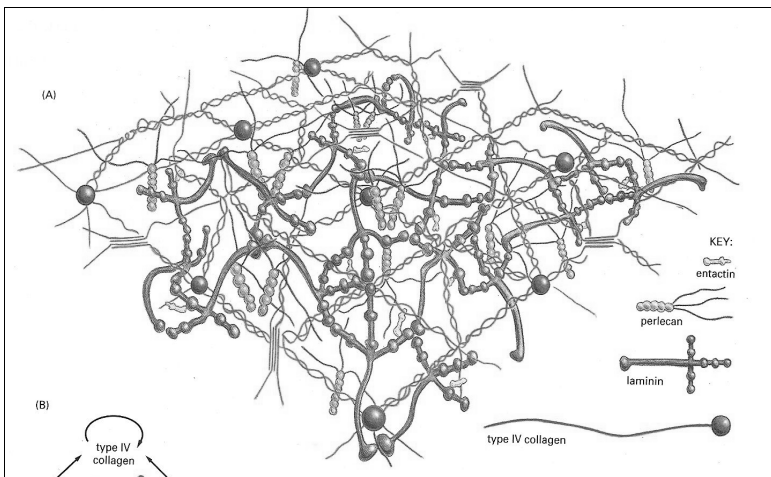
By: Bill Browning

Molecular biologists know that many body tissues in vertebrates are literally woven together. This is especially true of the connective tissue containing collagen fibers that constitutes the architectural framework of the vertebrate body.

God's design of flesh contains tissues that are not made up solely of cells. A substantial part of their volume is *extra-cellular space*, which is largely filled by an intricate network of macro-molecules known as the **Extra-cellular Matrix**. Macro-molecules are secreted by the cells they support, and form a thin, durable sheet-like “mesh” which has major properties and functions. **Collagen** fibers both strengthen and help to organize the matrix, while the adhesive proteins (e.g. **laminin**) help cells attach to the appropriate part of the extra-cellular matrix and promote the attachment of epithelial cells to the underlying substrate, called the basal laminae.

The extra-cellular matrix plays a complex role in regulating the behavior of the cells that contact it—influencing their development, migration, shape, and function. The basal laminae are able to influence cell metabolism, organize the proteins in adjacent plasma membranes, induce cell differentiation, serve as specific highways for cell migration, and promote tissue regeneration after injury.

The matrix is built on a mesh of collagen IV fibers that literally are woven with the “warp and woof” of the weavers trade. (Figure 1. \* ©1994 From Molecular Biology of the Cell, 3E. Reproduced by permission of Garland Science/Taylor and Francis LLC.)



**Figure 1.** \* Woven Molecular Structure of a basal lamina. Showing Collagen IV, Laminin, and entactin plus the proteoglycan perlecan.

Ps 139:13 “You did knit me together in my mother’s womb. My frame was not hidden from You when I was being formed in secret and intricately and curiously wrought [as if embroidered with various colors]. Your eyes saw my unformed substance, and in Your **book** {DNA code?} all the days of my life were written.

The cells are attached to the basil laminae by an adhesive glycoprotein called **laminin**. This trimeric laminin gives a structure that can bind to cell membrane and extra-cellular matrix molecules. The long arm is capable of binding to cells, which helps anchor organized tissue cells to the membrane. So, the connective tissue is literally glued together by the **laminin** proteins.

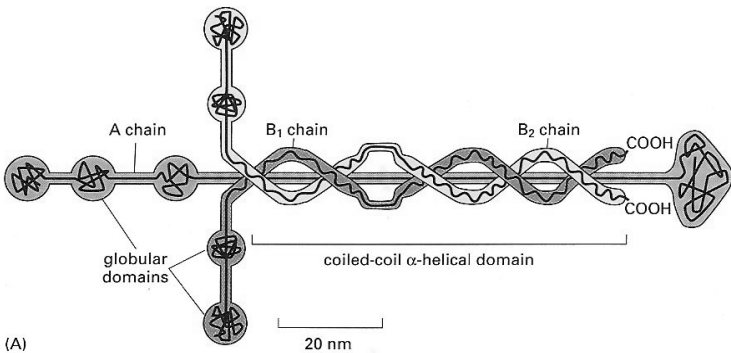
The structure of this amazing molecule also reflects our Creator and Redeemer—Not only is it formed into the shape of a cross, but also the cross (Figure 2.) is formed by **three** long amino acid chains which are coiled together to form a helix, which reminds us of the Trinity and the triune nature of created Man: body, soul, and spirit.

This cannot be a coincidence, any more than the passion flower symbolizing Christ’s crucifixion is an accident of nature, or the bones of the sailcat fish which model His crucifixion. (Photos below.)

Through these interactions, laminins critically contribute to cell attachment and differentiation, cell shape and movement, maintenance of tissue phenotype, and promotion of tissue survival.

Colossians 1:16-17 “For it was in Him that all things were created. . .

And He Himself existed before all things, and in Him all things consist (cohere, are **held together**). AMEN.



**Figure 2.\* Laminin Molecule Structure**



# The Amazing Regenerating Rib - by Dr. Georgia Purdom

Reprinted with Permission from Answers in Genesis

[www.answersingenesis.org](http://www.answersingenesis.org)

The skeletal system is one of the most underappreciated organ systems in our bodies. Bones are usually considered rather static and not to contribute much to overall health. However, bones are some of the most dynamic organs in the body and constantly change to help the body deal with the stresses (nutritional and physical) that are encountered. Ribs are truly amazing bones not only for the physical roles they play in our bodies, but also for their connection to Genesis.

## Anatomy and Physiology of Ribs

Both men and women have 12 pairs of ribs.<sup>1</sup> These ribs extend from the vertebrae to form the wall of the thoracic cavity (where the lungs and heart reside). The first seven pairs of ribs are called true ribs and connect to the sternum. The remaining five pairs of ribs are called false ribs because they don't attach directly to the sternum. Ribs 8–10 attach to cartilage that attaches the true ribs to the sternum, and ribs 11–12 are floating—they do not attach to the sternum or other ribs.

The function of ribs is threefold. First, they provide protection for the lungs and heart. The ribs more or less form a “cage” around these very important organs. Second, they are one of the few bones that continue to make red marrow (and thus blood cells) in the adult. Third, they serve as attachment points for chest muscles involved in respiration.

The rib cage can be thought of as a handle on a bucket. When we breathe in, the muscles attached to the ribs pull the ribs out just as when you lift the handle on a bucket from the side—it goes out and up. The lungs are coordinated with this movement, expand and take air in. The opposite occurs when we breathe out; the muscles attached to the ribs relax, and the ribs go down and in (just like dropping a bucket handle)—and the lungs follow (become smaller) causing air to leave.

The absence of this latter function was known by our Savior during His crucifixion on the cross. In crucifixion the arms are stretched to the extent that the chest muscles connecting to the ribs are pulled tight. A person enduring crucifixion can breathe in, but they have a difficult time breathing out. The ribs remain in a fixed position because the muscles attached to the ribs can't relax. Thus, the lungs can't become smaller, which is necessary for air to leave.

Jesus would have had to lift Himself up (scraping a severely beaten back on the wooden cross) to allow the chest muscles to relax and the rib cage to move so He could breathe out. To think that He did this successfully for several hours and managed to say seven phrases during that time period should make us appreciate even more His sacrifice for us.

## Regenerating Ribs

Although all bones can repair themselves, ribs can regenerate themselves.<sup>2</sup> Ribs are commonly removed during surgeries that require bone grafts in other parts of the body. The rib is removed from the periosteum (a tissue surrounding the bone) much like a banana would be removed from its peel while keeping most of the peel intact. The periosteum must remain, as it contains osteoblasts which build the new rib bone.

## Ribs and Genesis

The rib bone is one of the few bones mentioned by name in Scripture. Genesis 2:20b–22 states, “But for Adam there was not found a helper comparable to him. And the LORD God caused a deep sleep to fall on Adam, and he slept; and He took one of his ribs, and closed up the flesh in its place. Then the rib which the LORD God had taken from man He made into a woman, and He brought her to the man.” Being a woman this is an especially important part of Scripture to me!

Some people have mistakenly thought that because God used a rib from Adam to make the woman that all men have one less rib than women.<sup>3</sup> We know this is false because we can easily count the number of ribs in men and women and see they are the same. The number of ribs is determined by the code written in our DNA. God did not change Adam’s DNA; He simply removed one of his ribs to use for the creation of the woman. Thus, all men descended from Adam (and Eve) would have 12 pairs of ribs, even if Adam had one less rib. The same could be said for a man who loses his leg due to an accident. Would all his children only have one leg? Of course not—the man’s DNA that codes for two legs has not changed.

God chose from Adam the one bone that could regenerate itself. So, even though he likely had one less rib bone for some period of time (possibly to some an indication of imperfection before the Fall), we still observe perfection and completeness in Adam physically before the Fall due to the regenerative capability of the ribs.

As a woman I find it compelling that God chose to remove a bone from Adam’s side versus from his head or his feet to create the woman. Matthew Henry states, “That the woman was made of a rib out of the side of Adam; not made out of his head to rule over him, nor out of his feet to be trampled upon by him, but out of his side to be equal with him, under his arm to be protected, and near his heart to be beloved.”<sup>4</sup>

God made the woman to be Adam’s helper, “And the LORD God said, ‘It is not good that man should be alone; I will make him a helper comparable to him.’” (Genesis 2:18). God instituted different roles for husbands and wives from Creation, but they were adversely affected by the Fall (Genesis 3:16). However, the Fall did not change the fact that God made the woman (and thus all women) equal in status to Adam (and thus all men).<sup>5</sup>

### Footnotes

1. Men and women can have supernumerary ribs, but this is rare.

2. Keith L. Moore and Arthur F. Dalley, *Clinically Oriented Anatomy*, 4th ed. (Philadelphia: Lippincott Williams & Wilkins, 1999), p. 64.

3. The woman was not named Eve until after the Fall (Genesis 3:20).

4. Matthew Henry, *Matthew Henry’s Commentary on the Whole Bible*, Volume I (Genesis to Deuteronomy), Notes on Genesis 3:21–25.

Found online at [http://www.ccel.org/ccel/henry/mhc1.i\\_2.iii.html](http://www.ccel.org/ccel/henry/mhc1.i_2.iii.html).

5. Although husbands and wives have different roles (Ephesians 5:22–33), they are equal in status before God.

## Sept. Meeting Highlights

Our speaker for our September 11th meeting was Dr. Kevin Anderson, a Ph.D. microbiologist who has published over 20 papers in technical microbiology journals and has given presentations at numerous national and international scientific meetings. He is also currently the Editor-in-chief of the Creation Research Society Quarterly ([www.crsq.org](http://www.crsq.org)), and is the Director of the Creation Research Society's Van Andel Creation Research Center. CRS is the only major creationist organization that is involved in original creation research.

Dr. Anderson began his talk by mentioning the National Geographic edition "What Darwin Didn't Know". Darwinism was accepted in a vacuum of scientific knowledge. The Origin of Species is a lot of "maybes" and "perhaps". Today, science has shown it's a "no way". Scientists today who still accept Darwinism have "no excuse" (Romans 1).

Dr. Anderson then delved into genetics and gave a brief history of the "junk DNA" myth.

When the first sequence of the human genome was completed, evolutionists loudly proclaimed it showed conclusive evidence of common descent. They based this largely on the belief that most of the DNA was functionless, or "junk".

They said a Creator wouldn't create junk. Over time, as modern science showed that there is little or no "junk" DNA, the evolutionists went silent. As it turns out, there is much going on above the sequence level, and maybe, just maybe, it has something to do with the "junk"! DNA is after all a three-dimensional structure. This laid the groundwork for the highlight of Dr. Anderson's talk, an amazing new piece of genetic evidence that is a silver bullet that completely invalidates evolution.

This silver bullet involves how DNA serves as a blueprint. A DNA segment encoding a protein usually has a "sense" strand and a complementary "antisense" strand which acts as a template for the RNA polymerase. It has recently been discovered that the anti-sense strand also has information!

That is, when you read down the strand in one direction, you get protein sequence coding; when you read in the opposite direction, you also get coding information! This is simply remarkable, and impossible for evolutionists to explain using naturalistic processes. It also shows that "beneficial" mutations are now much more unlikely since the change of a letter (mutation) in one of the strands changes the letter on the other strand. At best the evolutionist can hope for a wash!

**( Continued on Page 13 )**

## October Meeting Highlights

Mr. Paul Myrant was our speaker on October 9th. Paul Myrant is a graduate of Talbot Seminary where he received his M.A. in Biblical Studies. He is the author of "The Challenge of Evolution: Is There a Creator? What is He Like, and How Did He Create the Universe?" He is also a musician and songwriter and has served as a senior pastor, teacher and coach. Paul and his wife Jan have been married for 32 years and have four children and three grandchildren.

Mr. Myrant's talk was entitled "The Creator and the Bible", a brief history of evolution in the framework of 2 Peter 3 and Genesis 1. Mr. Myrant began by contrasting what secular science says compared to what the Bible says. For example, secular science believe everything started with a big bang, while Genesis says God created in 6 days from nothing (ex nihilo); secular science says the earth is billions of years old, while Genesis says the Bible is less than 10,000 years old; secular science says the stars were created before the earth, the Bible says earth was created before the stars, etc, etc. These two worldviews are clearly contradictory and cannot meet. Mr. Myrant pointed out that the conflict must be resolved since the credibility of the Bible is at stake.

Mr. Myrant took us through a short history of this conflict. He mentioned the fundamental flaw at the time of Galileo where the secularists essentially put forth that "science proclaims the glory of God and the work of his Hand". However, as Psalms 19:1 says, the creation itself declares God's glory, not men's interpretation of it. He then mentioned James Hutton and Charles Lyell, who both promoted the belief that the earth's features are the result of gradual change over time, and whose teachings greatly influenced Darwin. Mr. Myrant mused how scientists claim there must have been a flood on Mars, yet you can't find an ounce of water there; yet they deny a flood on the earth despite enough water that if the mountains were laid flat the earth would be covered with water 1.7 miles high. Mr. Myrant then discussed Darwin's decent from faith that can be tied directly his rejection of the historical account of Genesis. He believes that the secular attack on Genesis is not just a slippery slope, its jumping off the cliff.

**( Continued on Page 13 )**

## President's Corner Continued

Having served as a university professor actively involved in graduate chemistry education and basic research for some 29 years and having published numerous papers in peer-reviewed journals clearly demonstrates my accurate comprehension of the scientific method and thus qualifies me to comment upon it.

The other part of Dudrick's statement, "...no reproducible research supports intelligent design, but that evolution has much research supporting it", is a catch-22 to say the least. Note that Dudrick requires reproducible research to justify ID but drops the reproducible requirement from the research supporting evolution. Obviously, Dudrick does not understand what the term *intelligent design* actually means. By its very nature, ID specifies that rational explanations regarding specific observations demand a superior intelligence, beyond human capability and outside of the limits of the scientific method per se. Consequently, ID cannot be vindicated by any reproducible research anymore than evolution can be supported by any unbiased, reproducible research. The statement that there is 'much' research supporting evolution is a vacuous, opinionated point of view. I challenge Dudrick, or anyone else for that matter, to provide one example in which the application of the scientific method yields reproducible, non-opinionated, scientific data justifying unquestionable support of evolution. I am confident that no such evidence exists."

I know that the iD movement has been challenged by some creation scientists as not acknowledging God as the Creator; but I am not of this opinion, because as a Christian and a creationist, I know that only God can be the Creator and he did not use evolution in the process. Finally, contrary to Dudrick's belief, there is no *creative* part of science, because the scientific method (correctly applied) is objective and not subjective.

## Year-End Giving

RMCF relies on the prayers, gifts, and donations of its' members for it's operations. Without them, we could not bring the quality of speakers that have visited RMCF over the years.

Could you please consider making a gift to RMCF?  
We would be honored to receive your gift to further  
the cause of creation science in 2010!

RMCF is a 501(c3) non-profit organization and your gifts are tax deductible.

## September Meeting Highlights Continued

Dr. Anderson gave an interesting analogy of the information content of the DNA. The book War & Peace has 1400 pages. He said the human genome is like having War & Peace printed on 14 pages. You can read it in multiple directions, you fold it and read it again, fold it another way and read it again. Could you write such a book? Can anyone in the world write such a book? Could you read that book? Yet that book has been written, and it's called the human genome! Creationists recognize this as a fingerprint of God. But those who hate God willfully ignore the fingerprint of God. It's a matter of the heart, not the mind (Romans 1:18-32).

## October Meeting Highlights Continued

Mr. Myrant then covered the Apostle Peter's prophesy in 2 Peter 3, that secularists will push the idea of gradual change over time, and that they do so deliberately. He noted that Peter prophesied that these scoffers would also reject a future judgment. Amidst their willful rejection of solid evidence for the flood, they will lampoon Christians for having a "blind" faith. Mr. Myrant pointed out the Christianity is not based on blind faith at all. Christianity is true, not because it's his opinion it's true, but because of historical facts and historical realities.

Mr. Myrant pleaded with us to not be afraid to tell people the truth. If they reject it, don't be discouraged and try another means to reach them. If you still cannot reach them, pray for them that some other means will open them to the truth.

## Darwin Was Wrong Webcast

Calvary Chapel in California is hosting a web conference featuring many well known creation scientists. Be sure to check it out at [www.calvarychapel.com](http://www.calvarychapel.com) or <http://video.ccm.com/> on November 13th beginning at 7:50 PM MT and November 14th at 9:30 AM MT. Speakers include Dr. John Baumgardner, Dr. Tom McMullen, Dr. Steve Austin, Dr. Marcus Ross, Dr. Robb Carter (he spoke to RMCF in June), Dr. John Sanford, Dr. Jerry Bergman, Dr. Charles Ware and Pastor Chuck Smith. This does overlap with the RMCF Meeting on Nov. 13 and you don't want to miss Lou DeGrave! Calvary will have a DVD available for the Friday sessions. Info: [www.calvarychapelcostamesa.com](http://www.calvarychapelcostamesa.com)

## *Creation vs. Evolution Factoid #3*

### *Evolutionary Development*



Introduction. Often our members ask, “What are the leading facts that refute the claims of evolution?” We are establishing this new column, Creation vs. Evolution FACTOID to give succinct nuggets on each issue, which collectively will answer the question.

#### **Evolutionary Development (Evo-Devo) Supports Creation, Not evolution**

Kevin Anderson, Ph.D.

All cells of the body contain the same set of chromosomes. But different body cells use different genes on these chromosomes. The difference between a brain cell and a muscle cell is due to the genetic switch that determines when specific groups of genes are “turned on” during embryo development. This is also how embryonic cells know where to put the ears, eyes, and fingers. Such switching of genes “on” and “off” is key to proper development of the embryo, and birth defects (such as missing fingers or toes) often result from errors in the timing and specificity of these genetic switches.

Research with fruit flies has demonstrated that changes in these genetic switches can cause such deformities as additional wings or eyes (which are functionless), placement of legs on the head, or the complete absence of wings or eyes. Since these alterations result in large-scale developmental changes, many evolutionists point to these genetic switches as key mechanisms for evolutionary development, (*i.e.*, Evo-Devo). A feature article in *U.S. News and World Report* (March 18, 2005) presented the idea that at last Evo-Devo provides a genetic mechanism for evolution (although common descent is not mentioned).

Also not mentioned in this article is that Evo-Devo requires the genetic template of genes and control systems to already be in place. It offers no explanation for the origin for these elaborate and complex genetic systems - an essential requirement for evolutionary theory. Instead it demonstrates that alterations of such systems will readily cause morphological deformities, such as eyeless fruit flies - truly an evolutionary wonder. The more benign of these developmental changes, such as pigmentation intensity or location, fit well with a creation model, and offer an example of how extensive varieties can be introduced into the created kinds. But, these level of changes do not provide a sufficient means of accomplishing common descent. In fact, Evo-Devo is unable to give legs to a fish, wings or feathers to a reptile, or an opposite thumb to a dog. Evo-Devo is limited to the genetic potential already present in the specific organism, and merely demonstrates that altering the precise synchronization of these genetic switches can lead to a wide variety of deformities.

This is totally consistent with a creation model, but fails to fulfill the grandiose claims of evolutionists.

For further information:

May, et al, 2004, Creation Research Society Quarterly 41:185

Used by permission of the Creation Research Society. [www.crsq.org](http://www.crsq.org)