

## Rocky Mountain Creation Fellowship

*Educating the World  
On the Truth of Creation*

Volume 71 Oct./Nov. 2011

### President's Corner

#### Some “Molecules of Life” Reported Found in Meteorites—the Implications?

As a chemist, it has bothered me for some time that organic molecular substances have been reported to be found in meteorites. It is particularly disturbing that even amino acids (building blocks of proteins) and some precursors to nucleotide bases (essential components of DNA and RNA) have been included in these findings. Naturally, such reports provide big news splashes highlighting *molecules for life found in outer space*. It is obvious that the intent of these reports is to reinforce theories that life on earth could have originated from outer space (panspermia). Of course it is an exceedingly long stretch to imply, for example, that proteins have evolved because of the presence of some amino acids. As a matter of fact I published a paper with my friend, Dr. John De Massa, showing that it is chemically impossible to form peptides (segments of proteins) from amino acids in a “soup” of the type produced by Stanley Miller and co-workers, in the origin of life experiments during the 1950's through 1970's (see *Journal of Creation*, Vol. 24 (1) 2010, pp. 121-126).

It is commonly accepted that most meteorites are believed to be formed at temperatures ranging from greater than 1100 °C to greater than 1400 °C. (1), (2) If various relatively complex organic molecules were indeed detected in meteorite samples, the reported concentrations are quite small, ranging from parts per million to less than parts per thousand. But even more important is the fact that the temperatures of the meteorites at the time of their formation, when organic substances would have supposedly been absorbed, exceed by far the maximum temperatures at which the organics decompose.

Consider these typical examples:

#### Molecule Decomposition Temperatures (°C)

<u>Amino acids:</u>	Glycine	233
	L- Alanine	297
<u>Nucleotide bases:</u>	Adenine	365
	Guanine	360

Recall that the minimum temperature for meteorite formation exceeds 1100 °C. Thus it is impossible for these organics to be absorbed into meteorites during their formation, at some location in outer space. A more reasonable explanation for detecting small amounts of the organics in question is the following: the organics were adsorbed onto the surface of the meteorites, as they impacted the earth's surface, at temperatures below the decomposition temperatures of the compounds. This is further substantiated by the fact that the organics are present in very small amounts.

In conclusion, it can be safely said that not only were the “molecules of life” not transported to earth from outer space (see also the Bible: Deut. 4: 32), life, but also these findings have no implication on the origin of life.

#### References:

- (1) [Wikipedia.org/wiki/Asteroid\\_belt](http://Wikipedia.org/wiki/Asteroid_belt)
- (2) Google: Trieloff and Palmer review of meteorites, “L-chondrite asteroid break up tied to Ordovician meteorite shower,” p. 121, 2<sup>nd</sup> paragraph, lines 3-4).

Blessings in His Holy Name, Ed  
(Dr. Ed Boudreaux, RMCF President)

## October Meeting Plans

In October, RMCF will observe our annual celebration of Creation Weekend, in honor of Rosh Hashanah, the anniversary of Creation. To commemorate this occasion, we have invited renowned creation scientist, speaker, and author, Mr. Frank Sherwin of the Institute for Creation Research in Dallas, Texas to bring a presentation in our regular monthly meeting, Friday October 14. In addition, we will have a birthday cake for Adam, who, according to the Jewish calendar, will be 5771 years old on September 28 this year.

Biologist Frank Sherwin received his bachelor's degree in biology from Western State College, Gunnison, Colorado, in 1978. He attended graduate school at the University of Northern Colorado, where he studied under the late Gerald D. Schmidt, one of the foremost parasitologists in America.

In 1985, Mr. Sherwin obtained a masters degree in zoology. He published his research in the peer-reviewed *Journal of Parasitology*. Mr. Sherwin contributes his scientific expertise to a variety of ICR's publications on creation science. He is the

author of *The Ocean Book* and co-author of *The Fossil Record: Unearthing Nature's History of Life* and *The Human Body: An Intelligent Design*, and is one of ICR's most sought-after speakers.

Mr. Sherwin's topic for the evening: "*The Current Status of Creation Science*".

**Don't miss this special occasion!**

Mr. Sherwin will continue our extended observance of Creation Weekend, appearing at three services of the Horizon Christian Fellowship on Saturday, October 15 (6:00 pm), and two Sunday Services (9:00 and 11:00). His topics will include "War of the Worldviews," the "Genesis Flood," and "Scientific Evidences for Creation." The church is located on Belleview and Federal, southwest corner.

## November Meeting Plans

For our November 11 meeting, we are honored to host Tommy Lohman. From a very early age, Tommy's fascination with dinosaurs was strong, but the unseen indoctrination attached to dinosaurs distorted his understanding of the early chapters of Genesis. Constant "old earth evolution" and silence from the church continued to cloud his understanding and caused him to doubt Genesis as a literal account of the early history of the world.

Being raised in church did not insulate him from these anti-God, anti-gospel influences. In 1993, he reconnected with his childhood fascination



with dinosaurs. After watching Steven Spielberg's movie "Jurassic Park," he began to sense that previously held beliefs about Genesis, dinosaurs and the age of the earth were not properly rooted. God then led him to a diligent study of the Bible, starting with Genesis 1-11.

Dr. Henry Morris' book, "The Beginning of the World," and the creationist ministry "Answers in Genesis" revealed truths about the beginning of the world and dinosaurs Tommy had never considered before. The past 18 years of his life have been dedicated to the study of creation by starting with a literal approach to history in Genesis.

Creation Connection Ministries was founded on a simple desire to "connect the dots" about the truth of the beginning of the world by using the Bible, beginning with Genesis, as a foundation for a sound, Biblical worldview. In 2008, God stirred his soul and showed him that creation apologetics simply for information's sake was insufficient; there was a deeper need for sound creation teaching in the defense of the gospel of our Lord Jesus Christ. As a result, it is his heart's desire to bring all presentations, conversations and writings about creation apologetics back to the heart of the matter: the foot of the cross.

Mr. Lohman will speak on his favorite subject, "*Dinosaur Fossils, They Don't Come With Directions.*" **Join us and become equipped to use dinosaurs as an evangelistic tool.**

## August Meeting Highlights

At our August meeting, we enjoyed a marvelous presentation on the architecture and processes of the human lymphatic system given by Dr. Dan Korow, a biology and general science teacher. We usually take our lymph for granted, not realizing its major importance to maintaining our health. As part of the immune system, it functions to fight disease while providing nutrients to the cells.

Dan took an interesting approach of building up a schematic diagram of the lymph system, by systematically addressing requirements to maintain health in the body. (An engineering approach.)

The need to supply nutrients to/from cells is satisfied by tissue fluid that bathes the cells, providing a transport medium. The tissue fluid is supplied by leakage from the blood capillaries, and it passes in and out of cells carrying important nutrients, chemicals, and gas molecules.

Next, we need a network of lymph vessels to drain the tissues of excess fluid and avoid edema, while recycling the fluid into the veins and maintaining adequate blood volume. Similar to the 93,000 miles of blood vessels, the lymph system contains a like amount of vessels, called lymph tissue, which are open-ended in order to collect, purify, and return the fluid to the circulatory system. These vessels are parallel to the blood vessels and carry lymph throughout the body without a pump like the heart. (See Fig. 1) The lymph capillaries have one-way valves that draw in fluid, made up of overlapping epithelial cells. The force to move the lymph along comes from the surrounding muscles. The lymph gets squeezed up by our body muscles and the check valves prevent reverse flow. When we walk, we are circulating the lymph. This process overcomes gravity and circulates lymph upwards from the legs, an amazing process.

The more we dig into the microscopic complexity of the human body, the more humbled we are by our limited understanding. It's like peeling an onion; we get to the next layer and just want to cry! (due to the futility of trying to understand the complexity of the body)—an incredible machine.

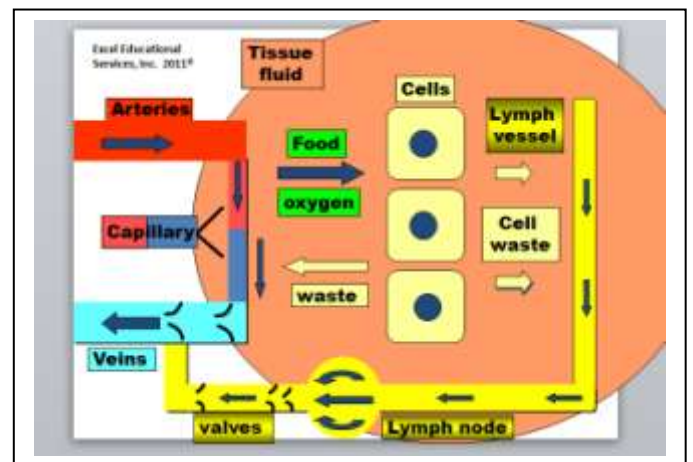
The requirement to purify the lymph fluid is fulfilled by the lymph vessels that connect to the

lymph nodes, where the fluid is filtered and monitored for pathogens, which are attacked by lymphocytes and their antibodies, providing an early warning system for invaders.

Other lymph tissues include the spleen, which makes and stores white blood cells, the tonsils, appendix, adenoids, and thymus gland. Once thought to be useless vestigial organs, it is now well known that the tonsils contain lymph nodules strategically located in the throat as a first line of defense against invaders. Likewise, the appendix contains lymphatic tissue that produces antibodies.

An **antigen** is a substance or molecule that, when introduced into the body, triggers the production of an antibody by the immune system. The immune system includes three types of lymphocytes (white blood cells) that combat antigens. B cells, produced in the bone marrow, and T cells from the thymus gland, are specific for particular antigens that are being defended against, whereas the Macrophage cells respond to warning signals by consuming the bacteria. B cells make antibodies, which are 3-D molecules with a specific shape (like a key) that fits the foreign molecule shape. An amazing ability of the immune system is the ability to distinguish invader pathogens (viruses, bacteria) from our own cells: our cells know our name!

Fig. 1 Lymphatic System



Like Paul Revere—we have a built-in warning system that mobilizes the army in defense. Some defenders enter the blood stream and others into the lymphatic system.

Thanks to Dan for providing a clear understanding of our amazing lymph system. Now we are “ecstatic about our Lymphatic System.”

## September Meeting Highlights

The September 9 meeting was a double-header for RMCF. In addition to Dr. Ed Boudreaux's presentation explaining the contents of his book on a proposed theory of origins of the chemical elements, Ed Johlman treated us to a slide-show covering highlights of the Creation Safari he and wife Janie led through Yellowstone National Park (see Candy Dixon's article on Page 5).

Dr. Boudreaux's latest book, "God Created the Earth—Genesis of Creation Chemistry" is a highly technical treatise of conditions which the Creator might have used to form all the atomic elements of the periodic table from water. As described in Genesis 1:2, the primordial earth ("without form") was initially covered by water ("the deep"), before God completed the formation of the earth. In a layman's language discussion of his work, Ed proposed a novel plasma model by which the Creator's release of enormous amounts of energy transformed some of the water into heavier elements, via thermonuclear fusion. In this theory, the "hovering" or "fluttering" of the Holy Spirit in v.2 "over the face of the waters" agitated the primordial waters by energizing it into a plasma state, and achieving temperatures of  $2.2 (10)^{10}$  °K. At this high temperature, electrons would be stripped from atoms, leaving bare nuclei (positively charged particles) called plasma, and fusion of nuclei into other elements would occur by simple, two-body collisions.

Evolutionary models of chemical element formation imagine a myriad of mechanisms, beginning approximately 700K years after the Big Bang and requiring 1-2 By to complete. None of these theories have been substantiated on a laboratory scale simulation. However, experiments at the Proton 21 Electrodynamics Laboratory in Ukraine have demonstrated that explosive compression of metal or plastic targets can produce a plasma reaction from which all known chemical elements are produced instantaneously, including radioactive elements. Thus, the plasma theory is the only model having empirical observation support.

The key question raised by this model is: "Can the plasma produce the required chemicals, and then cool rapidly enough to be incorporated into the completed earth by the end of Creation Day Three, when God caused 'the dry land to appear'?" (Gen 1:9) Amazingly, Ed's calculations show that cooling would be completed within 2 ½ days, via

thermal conduction, based on a computed thermal diffusivity. The model also revolutionizes the theory of mineral formation, previously thought to have cooled from molten material. But plasmas are known to create pure solid minerals, being readily deposited directly from the plasma state, as in the formation of diamonds utilizing chemical vapor deposition.

Part II of the plasma theory addresses the question, "Why does radioisotope dating of rocks give a computed 'age' which is billions of years?" Although we know from biblical history that the earth is only 6000-7000 years old, the earth appears to have been created with an appearance of great age.



All of the usual radioisotopes used for rock dating have half-lives in the Billion-year range, so naturally the presence of any significant amount of decay products would imply a very old age, unless the decay rate was significantly higher in the past. Ed's calculations show that the elevated temperatures of the plasma accelerate the rate of decay, such that present day half-lives (Billion years) are reduced to only a few minutes! The book describes the effects of thermal, electrostatic and magnetic plasma energies on the isotope decay rates, and it was found that even though electrostatic repulsion would tend to negate the acceleration, that this effect is more than overcome by the thermal, magnetic and gamma-radiation effects increasing the decay rate.

Moreover, as the plasma cools down to approximately ten million degrees, the decay rates would return to normal, so that after the end of Day Three, when earth cooled to ambient temperatures, the decay rates would become the same as we observe today. This would explain how rocks only 7000 years old could show Billion-year radioisotope ages, because the initial decay rate during the primordial plasma state was accelerated.

Thanks to Professor Ed for this fascinating talk.

**Yellowstone Safari** by Candy Dixon

A safari is an expedition to hunt or observe animals in their natural habitat, especially in eastern Africa. While we didn't go to Africa, we did observe buffalo and elk.



But more spectacular than animals was the opportunity to observe our dynamic earth. A group of fellow creationists explored God's magnificent creation in Yellowstone National Park during the last week of July. Ed and Janie Johlman, formerly of Denver but now residents of Sheridan, Wyoming, put together a challenging itinerary to show us some of the many wonders of our first national park. Their leadership was augmented by the teaching of Phil Budd and Bill Browning. Many of our group had been to Yellowstone before, but it was our first trip. And what an experience we had! We are so thankful that we could learn and observe from a creation perspective.

Most of the group met at the Johlman's cabin in the Lake Village area on Saturday evening for s'mores and fellowship. Ed and Janie had prepared quite a packet and a detailed itinerary for our orientation. Unfortunately, my husband and I got a delayed start from Denver and didn't arrive until 11 PM. We did know that devotions were at 7 am Sunday and met the others then. What we didn't know was how spread out all the points of interest were. This was to our advantage as we rode with Ed and Janie to our first destination and got a private orientation along the way.

Sunday we traveled about 20 miles north to the Grand Canyon of the Yellowstone, which is 20 miles long, 1,500-4,000 feet wide, and has a depth of 1500 feet. The Yellowstone River flows over the Upper Falls (109 feet) and then the Lower Falls (308 feet).



There were

several

overlooks with spectacular views. We hiked along the north rim, descending to observation platforms at the crests of both falls.

From the south rim many people took the 330 steps down to the base of the Lower Falls.

Monday we drove about 40 miles west to Upper Geyser Basin. The most notorious geyser, Old Faithful, is located here. It erupts about every hour and a half ( $\pm 10$  minutes). We also watched the performances of several other geysers in this area. A few miles to the north was Midway Geyser Basin. We hiked up the hill to get a view of Grand Prismatic Pool from above. It's amazing to see the array of colors formed by a variety of thermophiles. Different colors of algae live in different temperatures of water. Grand Prismatic Spring pumps out over 4,000 gallons of boiling water each minute making it the largest hot spring in North America. Most of our group hiked up to Fairy Falls while the rest of us went to see Great Fountain Geyser go off. Many of us went back and ate at the Old Faithful Lodge cafeteria and then saw an evening eruption of Beehive Geyser. The narrow cone acts like a nozzle projecting a forceful column of water over 150 feet high. My husband and I managed to go to the opposite viewing area from the rest of our group. However, from our vantage point, we had several spectacular rainbows due to the setting sun.



Tuesday provided two different expeditions. Half of us drove about 25 miles north to climb Mount Washburn (over 10,000 feet). This trek was over 5 miles and about

2500 feet of elevation change. At the top was a Ranger Station with a tremendous view of the Grand Canyon of the Yellowstone, the Absaroka Mountains, and Yellowstone Lake to the distant south. The wind was blowing a gale, making picture taking a risky endeavor. The other half of our group went southwest and had an easy climb to an overlook of Yellowstone Lake. We too saw the Absaroka Mountains, Mount Sheridan (also over 10,000 feet), and the Tetons. Then we went to West Thumb Geyser Basin. This area sits on the shore of

West Thumb, an extension of Yellowstone Lake. It was fascinating to see the plant and animal life so close to hot springs and mud pots. Some of the thermal features are even underwater.



On Wednesday we traveled about 50 miles to the northwest corner of the park. This area's interesting feature is the sedimentary shale, whereas most of the rock

in Yellowstone is of volcanic origin. We saw the Mammoth Hot Springs and its travertine terraces. There are no geysers in this part of the park. The groundwater is not nearly as hot as elsewhere, only about 40 degrees F less than boiling. As a result, the bubbles coming up from springs in the Mammoth area are from carbon dioxide rather than heat. We took a hike through an amazing area called the Hoodoos. It looked like a giant had dumped a handful of gravel down the hill. The boulders ranged in size from 3-4 feet to the size of a small house. Many were stacked and slanted against each other. Many of us joined Janie in looking for her wallet that she lost here a couple of years ago. We finished the day by driving about 45



miles to West Yellowstone for "real" pizza (according to Ed). Then we headed back to our cabins at Lake Village, another 55-mile trek.

On Thursday we became "official" geyser gazers. Many of us arrived between 7 and 7:30 am to wait for Grand Geyser to erupt. We enjoyed each other's company and gained from the teaching of Phil Budd and Bill Browning while we waited over 5 hours for a spectacular show. Grand is the tallest predictable geyser in the world, each eruption can last 9-12 minutes and reach a height of almost 200 feet. It really put Old Faithful to shame. While it is considered "predictable", there is still a window of + or - 2 hours. We based our arrival time on the supposed eruption from the night before and

estimated about 9 am. However, after we arrived the prediction was updated to 10:30 am. And this particular morning Grand used up its entire window. It was well worth the wait! Some people spent the afternoon hiking to Lone Star Geyser while others just enjoyed more time at Upper Geyser Basin. Many of us convened at 5:30 pm for a scenic cruise on Lake Yellowstone.



Friday was an optional day that most of us took advantage of. One family drove down to spend the day at the Tetons. The hardy ones took another grueling hike to view the Crystal Creek petrified trees. And a few of us took in more geyser gazing at the Lower Geyser Basin and Fountain Paint Pot Area. Here we had a view of a volcanic tableland.



There were many dead lodge pole pine trees impregnated by silica. Clepsydra Geyser erupts almost continuously. Its water and steam come from several vents. It and many others were greatly affected by the Hebgen Lake Earthquake in 1959.

You can still see the devastating effects of the Yellowstone Fire of 1988 when about 1/3 of the park burned. This summer was the windiest on record, with six cold fronts sweeping through the area with high winds and lightening but no rain. There is still much that we didn't see during this trip to Yellowstone. Maybe we can talk the Johlman's into leading another Safari in a few years. God bless you, Ed and Janie, for your hard work and delightful leadership.

(Photos by Candy Dixon)

References: Spencer, J. (2006) *Yellowstone Trivia*; Coffin, Hergenrath, Bokovoy, and Oard (2005) *Road Guide to Yellowstone National Park and Adjacent Areas*; and Various Trail Guides published by the Yellowstone Association.

# Rocky Mtn. Creation Fellowship Science Workshop

## Saturday October 15, 2011

Time: 09:30 am – noon      Place: Bethlehem Lutheran Church Parish Activity Center  
2100 Wadsworth, Lakewood

Please join Bill Browning, RMCF Board member, and RMCF members for a morning of science discovery. A hands-on science workshop will be presented for students: **6,7, & 8<sup>th</sup> graders.**



Bill Browning is an engineer/scientist who is a frequent teacher of creation science topics, including “How to Teach Design Principles” presented at the CHEC homeschool conference last June.  
**JOIN US FOR A TIME OF DISCOVERY!**

The program is based on God’s creative acts described in the first chapter of Genesis, where students will discuss what God accomplished on each Day, and use hands-on experiments and demo’s to illustrate amazing examples of creative design in nature.

The workshop content seeks to understand the ATTRIBUTES of God as being clearly seen through what God has made (Rom 1:20), and to glorify Him as Creator.

Parents, students, and home-schoolers are urged to come and experience how God’s world conforms to God’s Word. Parents are encouraged to attend and help as teaching assistants (we need at least one for each table of six students.)

**For Reservations, please call Bill at 303-843-9556**

**RMCF Membership Application**

Name \_\_\_\_\_ Phone: \_\_\_\_\_

Address: \_\_\_\_\_

City/State/zip \_\_\_\_\_

Email address \_\_\_\_\_

Church Affiliation \_\_\_\_\_

Desire to receive Newsletter?    Yes \_\_\_\_\_ No \_\_\_\_\_

**Recommended Donation: \$20/yr**  
**Please mail form to Box 3451, Littleton, CO 80161**

**For the works of the Lord are great, sought out by all who delight in them.**

**The LORD has made his wonderful works to be remembered.**

**Psalms 111**

Notice: All RMCF Meetings are held free of charge to the public. Your contributions are tax deductible.

Please see our website [www.youngearth.org](http://www.youngearth.org) for detailed information on speakers and topics

***Don't Become Extinct!***

If your membership has expired, we need your renewal to cover costs of printing and mailing. Your mailing label shows the expiration date.  
Thanks- Pub.

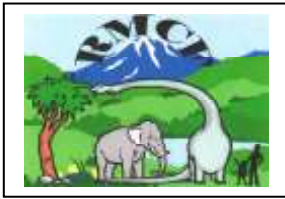
P.O. Box 3451, Littleton, CO 80161  
[Info@youngearth.org](mailto:Info@youngearth.org) 303-997-1101  
Publisher: Bill Browning  
Editor: Phil Budd

**RMCF Upcoming Speakers**

**October 14-16 Creation Weekend Celebration:**

- October 14 Frank Sherwin of ICR @ RMCF
- October 15 Creation Science Workshop  
Bill Browning, 9:30 am
- October 15 F. Sherwin @ Horizon Christian Fellowship, 6 pm
- October 16 F. Sherwin @ Horizon Christian Fellowship  
Two Services, 9:00 and 11:00 am

**November 11 Tommy Lohman  
Creation Connection Ministries**  
**December 9 Dave Prentice,  
New Orleans School Teacher**



**Rocky Mountain Creation Fellowship**  
P.O. Box 3451  
Littleton, CO 80161  
[www.youngearth.org](http://www.youngearth.org)

**CHANGE SERVICE REQUESTED**

NONPROFIT ORG  
U.S. POSTAGE  
PAID  
Littleton, CO  
Permit No. 313

## October/November 2011 Newsletter

### *Monthly Meeting Location*

*Second Friday of Month, 7 PM*

Bethlehem Lutheran Church Chapel

21<sup>st</sup> and Wadsworth

**“For in six days the LORD made  
the heavens and the earth,  
the sea and all that is in them...”**

Exodus 20:11



### Creation/Evolution Factoid No.14 Creation of the Stars (1)

Scientists cannot satisfactorily explain how a star could form. Stars are enormous, densely packed spheres of hydrogen gas with nuclear fusion taking place inside, resulting in the release of enormous amounts of energy. Yet, hydrogen gas will not condense into a super-concentrated ball within the vacuum of space for three fundamental reasons: First, gas gets hotter as the molecules are forced closer and closer together. Long before gravity could become strong enough to take over and condense nebular hydrogen clouds, the gas pressure would be a million times too strong to allow the continue collapse of the cloud. Second, the gas within the nebular clouds is rotating. As the material is pulled closer, it would rotate faster and the increasing angular momentum would drive the material apart, not allowing it to condense into a star. Third, nebular gas fields have a magnetic field associated with them. As the material within this field collapses, the field would

become increasingly concentrated and the material would repel like the poles of two magnets. These three natural laws preclude the possibility that hydrogen gas could form stars. Thus, there is no mechanism explaining the formation of stars, while there are numerous observations indicating that stars cannot form by any natural process, and we have never observed even a single star form. To account for all the stars in the universe, 20,000 new stars should be appearing every second. Yet, there is not a single documented, undisputed case of a new star forming anywhere in the known universe. Popular evolutionary theories include the ideas that supernovas produce shock waves or that “spiral density waves” exist, causing nebular gas to condense, but these natural explanations have impossible obstacles, and have never been observed. This leaves the improbable, yet possible explanation that stars exist simply as stated in Genesis 1:6 because “[God] made the stars also.”

How sad that this possibility is never allowed to be considered by students in our universities and school systems!

Reference (1): Abstracted from “Censored Science,” by Bruce Malone, p. 86